

FRD100CA120

UL; E76102

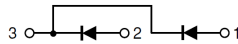
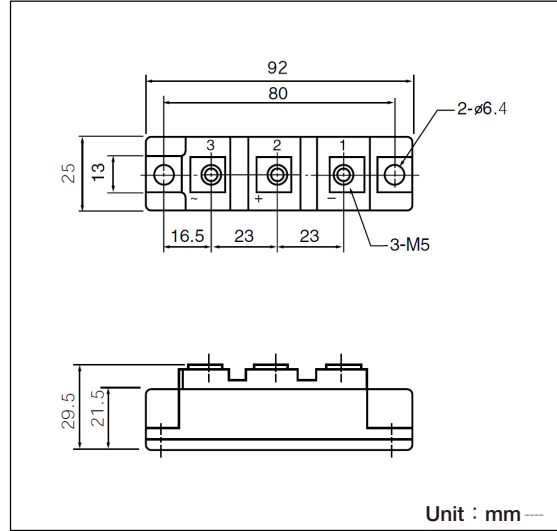
《Features》

FRD100CA is a high speed (fast recovery) dual diode module designed for high power switching application. FRD100CA is suitable for high frequency application requiring low loss and high speed control.

- High Speed $t_{rr} \leq 300ns$
- $I_F (AV)$ 100A (each device)
- Isolated mounting construction
- High Surge Capability

《Applications》

- Switching Power Supply /
- Inverter Welding Power Supply /
- Power Supply for Telecommunication



Unit : mm

■ Maximum Ratings (T_j=25°C unless otherwise specified)

Item	Symbol	Unit	FRD100CA120
Repetitive Peak Reverse Voltage	V _{RRM}	V	1200
Reverse D.C. Voltage	V _{R(DC)}	V	960

Item	Symbol	Unit	Ratings	Conditions
Forward Current	I _F	A	100	D.C. T _c =78°C
Surge Forward Current	I _{FSM}	A	2000	1/2cycle, 60Hz, Peak value, non-repetitive
I ² t(for fusing)	I ² t	A ² s	16600	Value for one cycle of surge current
Junction Temperature	T _j	°C	-40 to +150	
Storage Temperature	T _{stg}	°C	-40 to +125	
Isolation Voltage(R.M.S.)	V _{ISO}	V	2500	A.C. 1minute
Mounting torque	Mounting M6	N·m (kgf·cm)	4.7(48)	Recommended Value 2.5 to 3.9 (25 to 40)
	Terminal M5		2.7(28)	Recommended Value 1.5 to 2.5 (15 to 25)
Mass		g	170	Typical Value

■ Electrical Characteristics (T_j=25°C unless otherwise specified)

Item	Symbol	Unit	Ratings			Conditions
			Min.	Typ.	Max.	
Repetitive Peak Reverse Current	I _{RRM}	mA			5.0	V _R =V _{RRM} , T _j =150°C
Forward Voltage Drop	V _{FM}	V			1.8	I _F =100A, Inst. measurement
Reverse Recovery time	t _{rr}	ns			300	I _F =100A, -di/dt=100A/μs
Thermal Resistance(Junction to case)	R _{th}	°C/W			0.4	1 element

